

Canon

PowerShot S10
PowerShot S20
DIGITAL CAMERA

Software Starter Guide

Windows

Macintosh

There are precautions that you should take before installing the USB driver software. Ensure that you read this guide before installing it.

To Download Images to a Computer

for Windows for Macintosh

Install the Software

P.5

P.39

Connect the Camera to a Computer

P.7

P.40

Start the Software and Download Images

P.15

P.45

Start ZoomBrowser EX (Windows) or PowerShot Browser (Macintosh computers) and load images onto the computer.

This is the software guide for both PowerShot S10 and PowerShot S20 digital cameras.

This guide explains the installation method and features of the software for loading and processing images on a computer that have been shot with a Canon PowerShot S10 or PowerShot S20 digital camera.

Read the agreement in this guide before using the software on the supplied CD-ROM. By using the software, you agree to be bound by the terms of the agreement.

READ CAREFULLY BEFORE USING!
CANON SOFTWARE LICENSE AGREEMENT

IMPORTANT - READ THIS AGREEMENT BEFORE USING THE SOFTWARE ON THE CD-ROM IN THIS BOX. BY USING THE SOFTWARE, YOU AGREE TO BE BOUND BY THE TERMS OF THIS AGREEMENT.

This is a license agreement (the "Agreement") between you and Canon Inc. ("Canon").

IF YOU DO NOT AGREE TO THE TERMS AND CONDITIONS OF THIS AGREEMENT, DO NOT USE THE SOFTWARE PROGRAM ON THE CD-ROM AND THE USER MANUAL IN THIS BOX (COLLECTIVELY, THE "SOFTWARE") AND RETURN THE SOFTWARE WITHIN 30 DAYS FROM THE DATE OF PURCHASE TO YOUR POINT OF PURCHASE FOR A REFUND.

In consideration of the right to use the SOFTWARE, you agree to abide by the terms and conditions of this Agreement.

1. LICENSE: Canon grants you the non-exclusive right to use the SOFTWARE only on a single computer. You may physically transfer the SOFTWARE from one computer to another provided that the SOFTWARE is used on only one computer at a time. You shall not install or use the SOFTWARE on a network, multiple CPU, multiple site arrangement, or any other hardware configuration where the SOFTWARE is accessible to more than one CPU or to more than one user.

YOU SHALL NOT ASSIGN, SUBLICENSE, RENT, LEASE, LOAN, CONVEY OR OTHERWISE USE, TRANSFER, COPY, TRANSLATE, CONVERT TO ANOTHER PROGRAMMING LANGUAGE, ALTER, MODIFY, DECOMPILE OR DISASSEMBLE THE SOFTWARE, IN WHOLE OR IN PART, EXCEPT AS EXPRESSLY PROVIDED IN THIS AGREEMENT.

2. BACK-UP COPY: You may make one copy of the SOFTWARE solely for back-up purposes, or copy the SOFTWARE onto the permanent storage device (e.g. a hard disk) of your computer and retain the original for back-up purposes. Any other copying of the SOFTWARE is a violation of this Agreement. You must reproduce and include the copyright notice on the back-up copy.
3. SUPPORT AND UPDATES: Canon is not responsible for providing maintenance or support for use of the SOFTWARE. No updates, fixes or support will be made available for the SOFTWARE.
4. LIMITED WARRANTY AND LIMITATION OF LIABILITY: It is your responsibility to choose, maintain and match the hardware and software components of your computer system. Thus Canon does not guarantee uninterrupted service or correction of errors or that the functions or performance of the SOFTWARE will meet your requirements. THE SOFTWARE IS LICENSED ON AN "AS IS" BASIS AND WITHOUT WARRANTY OF ANY KIND. The CD-ROM storing the SOFTWARE is warranted only against defective material under normal use for a period of ninety (90) days after purchase from an authorized Canon dealer as evidenced by your sales receipt. Your sole remedy for a defective CD-ROM shall be replacement of the same without charge when returned by you at your expense to your point of purchase and proven to be defective upon inspection. The Replacement CD-ROM will be warranted for the remainder of the original ninety (90) day warranty period of the defective CD-ROM. The limited warranty does not apply if the failure of the CD-ROM resulted from accident, abuse or misapplication of the SOFTWARE and shall not extend to anyone other than the original user of the SOFTWARE.

EXCEPT AS SPECIFICALLY SET FORTH IN THIS PARAGRAPH 4, CANON, CANON'S SUBSIDIARIES, DISTRIBUTORS AND DEALERS DISCLAIM ALL WARRANTIES, EXPRESS OR IMPLIED, INCLUDING ANY WARRANTY OF MERCHANTABILITY OR FITNESS FOR A PARTICULAR PURPOSE, WITH RESPECT TO THE SOFTWARE.

NEITHER CANON NOR ANY OF CANON'S SUBSIDIARIES, DISTRIBUTORS OR DEALERS IS LIABLE FOR ANY DAMAGES HOWSOEVER CAUSED, INCLUDING WITHOUT LIMITATION, DIRECT, CONSEQUENTIAL OR INCIDENTAL LOSS OR DAMAGE INCLUDING LOSS OF PROFITS, EXPENSE OR INCONVENIENCE HOWSOEVER CAUSED OR ARISING OUT OF THE SOFTWARE OR THE USE THEREOF.

NEITHER CANON, NOR ANY OF CANON'S SUBSIDIARIES, DISTRIBUTORS OR DEALERS SHALL HAVE ANY OBLIGATION TO INDEMNIFY YOU AGAINST ANY CLAIM OR SUIT BROUGHT BY A THIRD PARTY ALLEGING THAT THE SOFTWARE OR THE USE THEREOF INFRINGES ANY INTELLECTUAL PROPERTY OF SUCH THIRD PARTY.

5. **TERM:** This Agreement is effective upon your using the SOFTWARE and remains in effect until expiration of all copyright interests in the SOFTWARE unless earlier terminated. You may terminate this Agreement by destroying the SOFTWARE. This Agreement will also terminate without notice to you if you fail to comply with any of the terms of this Agreement and you must then promptly return the SOFTWARE. In addition, Canon may enforce its other legal rights.
6. **U.S. GOVERNMENT RESTRICTED RIGHTS NOTICE:** The SOFTWARE is provided with restricted rights. Use, duplication or disclosure is subject to restrictions as set forth in either subparagraph (c) (1) (ii) of the Rights in Technical Data and Computer software clause at DFARs 252.227-7013 or subparagraph (c) (1) and (2) of the Commercial Computer Software Restricted Rights Clause at FAR 52.227-19, as applicable.
7. **SEVERABILITY:** In the event that any provision of this Agreement is declared or found to be illegal by any court or tribunal of competent jurisdiction, such provision shall be null and void with respect to the jurisdiction of that court or tribunal and all the remaining provisions of this Agreement shall remain in full force and effect.
8. **CONTROLLING LAW:** The terms of this Agreement as it relates to purchases of the Software in the United States of America shall be governed and construed in all respects in accordance with the laws and regulations of the State of New York, without reference to choice of law principles. The terms of this Agreement as it relates to purchases of the Software in Canada shall be governed by the laws of the province of Ontario.
9. **OWNERSHIP:** All rights, including but not limited to copyrights and trade secret rights, to the SOFTWARE belong to Canon, its affiliated corporations and third party licensors. Your use of the SOFTWARE is subject to the United States, Canada and other applicable copyright and trademark laws and nothing in this Agreement constitutes a waiver of the rights of Canon, its affiliated corporations and third party licensors under such laws. Nothing contained in Paragraph 1 shall be construed to give Canon any ownership rights in any images, graphics or textual material that you save in connection with the Software.
10. **ACKNOWLEDGEMENT:** BY USING THE SOFTWARE, YOU ACKNOWLEDGE THAT YOU HAVE READ THIS AGREEMENT, UNDERSTOOD IT, AND AGREE TO BE BOUND BY ITS TERMS AND CONDITIONS. YOU ALSO AGREE THAT THIS AGREEMENT IS THE COMPLETE AND EXCLUSIVE STATEMENT OF AGREEMENT BETWEEN YOU AND CANON CONCERNING THE SUBJECT MATTER HEREOF AND SUPERSEDES ALL PROPOSALS OR PRIOR AGREEMENTS, VERBAL OR WRITTEN, AND ANY OTHER COMMUNICATIONS BETWEEN THE PARTIES RELATING TO THE SUBJECT MATTER HEREOF. NO AMENDMENT TO THIS AGREEMENT SHALL BE EFFECTIVE UNLESS SIGNED BY A DULY AUTHORIZED OFFICER OF CANON.

This guide explains the software used with both the PowerShot S10 and PowerShot S20. All instructions apply to both models unless otherwise noted. The screen examples in this guide were taken with a PowerShot S10 connected unless otherwise noted.

Disclaimer

- While every effort has been made to ensure that the information contained in this guide is accurate and complete, no liability can be accepted for any errors or omissions. Canon Inc. reserves the right to change the specifications of the hardware and software described herein at any time without prior notice.
- No part of this guide may be reproduced, transmitted, transcribed, stored in a retrieval system, or translated into any language in any form, by any means, without the prior written permission of Canon Inc.
- Canon Inc. makes no warranties for damages resulting from corrupted or lost data due to a mistaken operation or malfunction of the camera, the software, the CompactFlash™ cards (CF cards), personal computers, peripheral devices, or use of non-Canon CF cards.

Trademark Acknowledgments

- Canon and PowerShot are trademarks of Canon Inc.
- Adobe, Adobe PhotoDeluxe and Photoshop are trademarks of Adobe Systems Incorporated.
- CompactFlash is a trademark of SanDisk Corporation.
- IBM is a registered trademark of International Business Machines Corporation.
- iBook and iMac are trademarks of Apple Computer, Inc.
- Macintosh, PowerBook, Power Macintosh and QuickTime are trademarks of Apple Computer Inc., registered in the United States and other countries.
- Microsoft, Windows and Windows NT are either registered trademarks or trademarks of Microsoft Corporation in the United States and/or other countries.
- Other names and products not mentioned above may be registered trademarks or trademarks of their respective companies.

Copyright © 2000 Canon Inc. All rights reserved.

Using the Software on the Windows Platform

Introducing the Software	2
System Requirements.....	4
Installing the Software	5
Connecting the Camera to a Computer	7
Connecting to a USB Port	8
Installing the Driver Software	10
Connecting to a Serial Port (COM Port)	13
Connecting via a CF Card Reader or PC Card Slot	14
From Loading to Printing	15
Basic Procedures for Using ZoomBrowser EX.....	21
Displaying Images	21
Organizing Images	23
Saving Computer Images to a CF Card in the Camera	24
Editing Camera Slide Shows	24
Stitching Panoramas Together with PhotoStitch	25
Editing and Applying Special Effects to Images	26
Printing Images	27
Loading Images with TWAIN-Compliant Application Programs (Adobe PhotoDeluxe, Photoshop, etc.)	28
Troubleshooting the Driver Software Installation ...	30
Troubleshooting the Computer Connection	58
Customer Support	59

Introducing the Software

This section introduces the powerful software programs provided on the supplied CD-ROM for the Windows platform.



PowerShot Solution Disk

ZoomBrowser EX

To load PowerShot S10/S20 images, start ZoomBrowser EX.

PowerShot S10/S20 Connection Functions

(Also effective for CF card readers or PC card readers)

- Displays the camera images.
- Downloads camera images to the computer.
- Saves computer images to a CF card in the camera.
- Edits slide shows for replay by the camera.
- Automatically starts and displays camera images when the camera is connected to a USB port.

Image File Management Functions

- Displays, moves, copies or deletes images stored on computer disks.
- Displays all the files in a specified folder at once and zooms them in and out to facilitate visual searches.
- Displays files in chronological order in a window that looks like a time tunnel.

Image Printing Functions

- Prints multiple images on the same page using the PhotoRecord printing utility.
- Performs auto layouts.
- Allows you to effortlessly place frames or backgrounds around your images for artistic effect.
- Lets you create your own exclusive albums.

Supports PhotoStitch Panoramas

- Allows you to select camera images or images registered with ZoomBrowser EX and start PhotoStitch to merge a series of images into a panorama in a few simple steps.

Supports the Adobe PhotoDeluxe Photo Retouching Program

- Starts the Adobe PhotoDeluxe photo retouching program so you can edit and apply special effects to your images.

PhotoStitch

- Automatically arranges images shot in Stitch Assist mode into the correct order and effortlessly merges them.
- Merges any number of images horizontally or vertically, or in a matrix format.
- Makes images with straight lines appear natural not crooked when merged. (Select the Wide display format)
- A 360 degrees scene shot in several frames can be merged into a 360 degrees image and saved in the QuickTime VR format, making it appear as if you were standing in the middle of the image looking about in all directions.

TWAIN Drivers

PowerShot USB TWAIN Driver

PowerShot RS-232C TWAIN Driver

These are the driver utility programs that work within TWAIN-compliant application programs, such as Adobe PhotoDeluxe and Photoshop, to load camera images directly into the application program. (The USB TWAIN Driver is for use with a USB interface. The RS-232C TWAIN Driver is for use with a serial port interface.) Neither TWAIN Driver can be used as a stand-alone software program.



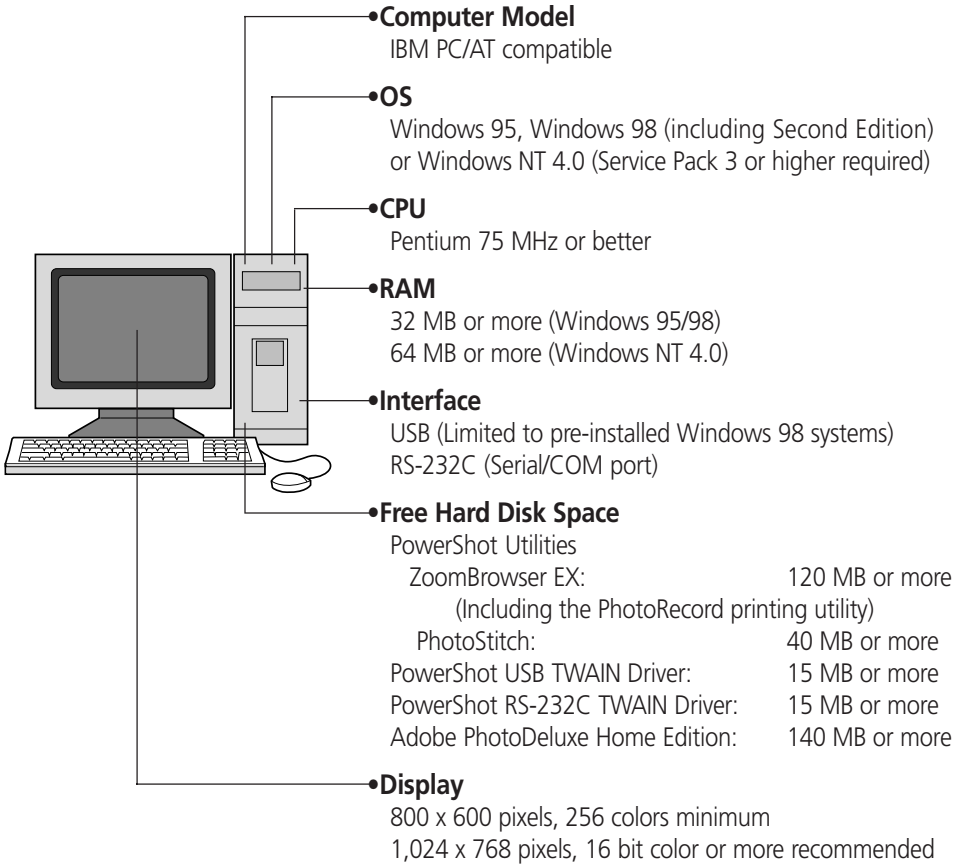
Adobe PhotoDeluxe (separate CD-ROM)

- Allows you to edit images and effortlessly create greeting cards, birthday cards and calendars.

If the accompanying CD-ROM with the PowerShot S10 is a PowerShot S10 Solution Disk, this CD-ROM is for exclusive use with the PowerShot S10. It cannot be used with a PowerShot S20.

System Requirements

The following system requirements must be met to install and operate the software.



- A CD-ROM drive is required to install the software.
- QuickTime 3.0 or higher is required to save images in the QuickTime VR format that have been merged in PhotoStitch.

Installing the Software

Installing from the PowerShot Solution Disk

1. Close any application programs that are running.
2. Place the supplied Solution Disk in the CD-ROM drive.
The installer panel will automatically display.



- If the installer panel does not automatically display, use the following procedures to start it.
 1. Double-click the [My Computer] icon on the desktop, and double-click the CD-ROM icon.
 2. Double-click the [Setup] icon.
3. Click [Software Installation].
 4. Select the install location and click the [Next] button.

5. Select the software that you wish to install.

- Select [Standard Setup] for a typical installation.
- Select [Custom Setup] if you wish to install only the minimum required programs.

Software Installed with the Standard Setup Option

PhotoStitch

PowerShot RS-232C TWAIN Driver

ZoomBrowser EX

PhotoRecord (prints images registered with ZoomBrowser EX)

OpenPage Print Component (software driver used by PhotoRecord)

- Follow the on-screen instructions to proceed with the installation.

6. Click the [Finish] button when the installation is complete and the installer panel appears again.

Installing Adobe PhotoDeluxe Home Edition

For installation instructions, place the Adobe PhotoDeluxe CD-ROM in the drive and click [ReadMe & Guide] and [Install Guide] in the window that displays.

The serial number shown during installation will be required for the user registration process.

If You Will Be Connecting via a USB Port

You must install a separate USB driver and the PowerShot USB TWAIN Driver. Please see page 10 for installation instructions.

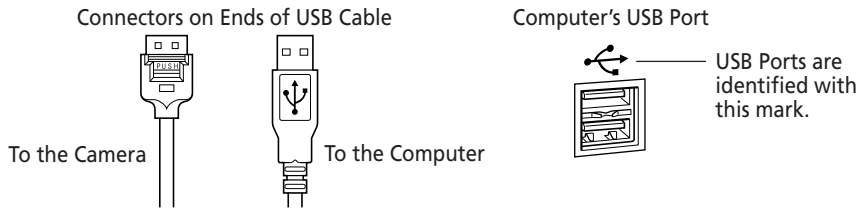
Connecting the Camera to a Computer

There are three interfaces that can be used to connect the camera to a computer. Once a connection is established using one of the three interfaces, you can start the software and begin to load the camera images. (→ p. 15 or 28)

Connecting to a USB Port (→ p. 8)

If your computer is equipped with a USB port such as that shown below, you can connect the camera to it with the supplied USB cable.

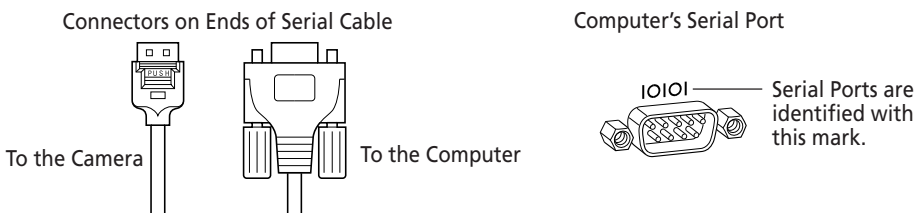
- The USB interface transfers data more rapidly than the serial interface and can start the image loading software automatically.



- The camera will not operate correctly with a USB port controlled by the Windows 95 or Windows NT 4.0 operating system.

Connecting to a Serial Port (COM Port) (→ p. 13)

If your computer is equipped with a serial port such as that shown below, you can connect the camera to it with the supplied serial cable.



Connecting via a CF Card Reader or PC Card Slot (→ p. 14)

If your computer is equipped with a CF card reader or PC card slot, you can place the camera's CF card into either device to establish a direct connection.

Connecting to a USB Port

Requirements for the USB Interface

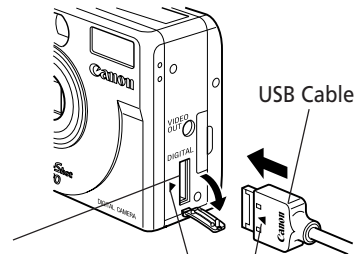
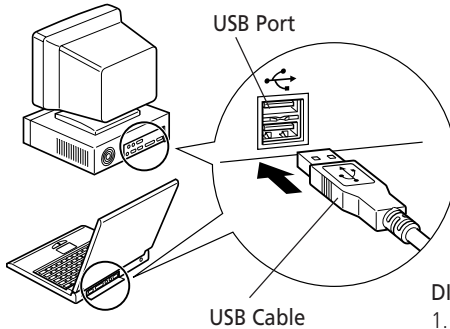
- The USB interface can only be used to connect the camera to computers purchased with Windows 98 preinstalled (clean installation). The USB ports on computers running versions of Windows 98 upgraded from Windows 3.1 or Windows 95 may not operate correctly.
- Connect the USB cable directly to one of the computer's main USB ports. The interface may not function correctly if the camera is connected via a USB HUB.
- The interface may not function correctly while other USB devices, excluding USB mice and keyboards, are connected. If this problem arises, detach the camera and the other devices, and reconnect the camera only.
- Do not connect more than one camera to the USB ports of the same computer at the same time. The cameras may not operate correctly.

Important

Please do not place your computer into standby mode while this camera is connected to its USB port. If the computer is placed into standby mode while the camera is connected to the USB port, do NOT disconnect the USB cable from the camera or computer. Try to revive the computer. If the USB cable is detached while the computer is in standby mode, some models of computer may not return to active mode correctly. For instructions regarding the standby mode, please consult the manual accompanying your computer and operating software.

1. Attach the supplied USB cable to a USB port directly on the computer and to the DIGITAL terminal of the PowerShot S10/S20 as shown below.

- There is no need to turn the camera or computer power off when attaching or detaching the USB cables.
- Please consult your computer's manual for the location of the USB ports.
- The camera can be connected to any USB port on computers that feature more than one.



DIGITAL Terminal

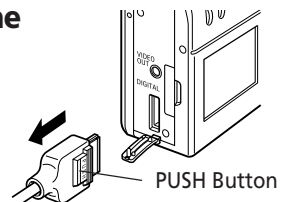
1. Open the DIGITAL terminal cover by slipping a fingernail under the top edge and pulling down.

2. Insert the cable so that the ► marks on the cable and camera align.

2. Install the USB driver and the PowerShot USB TWAIN Driver (First connection only). (→ pp. 10-12)

Precaution for Unplugging Cables from the DIGITAL Terminal

Always **press the [PUSH] button** on the connector to detach the cable from the camera's DIGITAL terminal.




Installing the Driver Software

(Preinstalled Windows 98 Systems) First USB Connection Only

Note Regarding Installation

- The driver installation process will install two programs: USB Driver and PowerShot USB TWAIN Driver.
 - Do not cancel the installation partway through. Allow the procedure to finish completely before exiting. The camera may not operate correctly if the installation is incomplete.
 - The driver installation is only required the first time the camera is connected via the USB interface. It is not required from the second time onward.
-
- Your computer may prompt you to insert the CD-ROM containing your Windows system software during the installation. Have the Windows disk handy in case it is required.

1. Attach the PowerShot S10/S20 to the computer's USB port and turn the mode dial to the  position (→ p. 8).

The [Add New Hardware Wizard] will appear after a moment.

2. Read the dialog and click the [Next] button.



The dialog will change to the search selection dialog.

What to Do if the Installation Does Not Proceed Properly

Read the Troubleshooting the Driver Software Installation section on page 30 if the installation cancels itself during the procedure, if the installation does not proceed as described in these procedures, or if you think that the drivers are not properly installed.

3. Select the [Search for the best driver for your device (Recommended)] option and click the [Next] button.



The dialog will change to one that allows you to specify the search location.

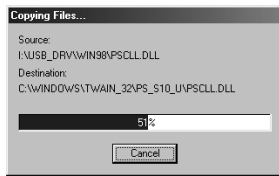
4. Select the [CD-ROM drive] option.
5. Place the PowerShot Solution Disk in the CD-ROM drive and click the [Next] button.



6. Read the dialog and click the [Next] button.



The file copying process will initiate.



Do not click the [Cancel] button while copying is in progress.

When all the necessary files have been copied, the dialog will state that the installation is complete.

- Your computer may prompt you to place the CD-ROM containing the Windows system software into the CD-ROM drive. See the box below.

7. Read the dialog and click the [Finish] button.

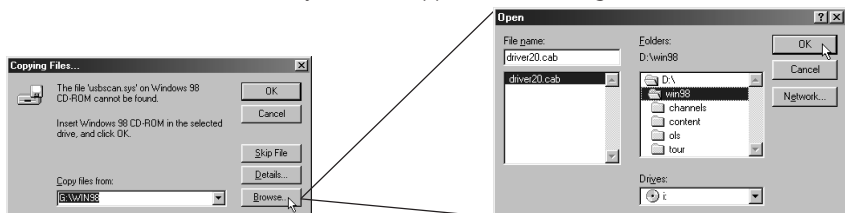


The [PowerShot S10 Event] or [PowerShot S20 Event] dialog will display to allow you to select application programs. (→ p. 15 Step 4, p. 28 Step 3)

- If a dialog prompts you to restart your computer, remove the Disk from the CD-ROM drive and restart the computer as prompted.

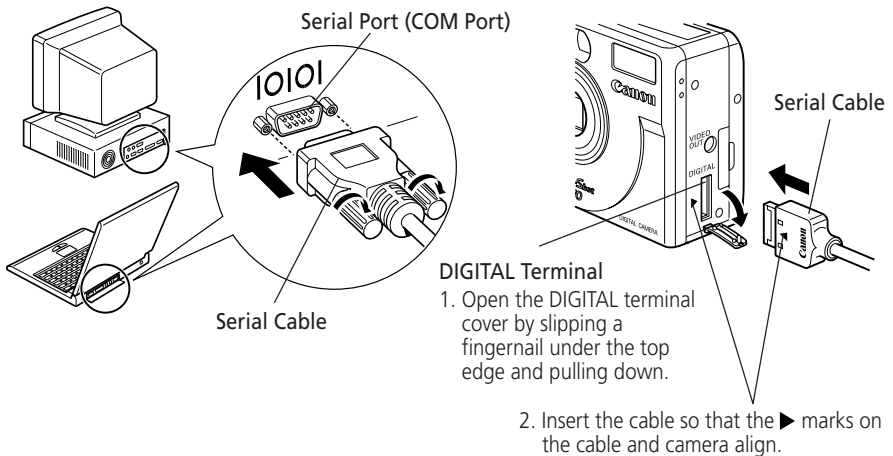
What to Do If You Are Prompted for the Windows System Disk during the Driver File Copying Process

If prompted for the Windows system disk, replace the PowerShot Solution Disk with it and perform the requested procedures. If a dialog states that the [usbscan.sys] file cannot be found, click the [Browse] button and specify the location as the [WIN98] folder on the Windows system CD-ROM. Be sure to specify [WIN98] on the Windows system CD-ROM, not the location for the [usbscan.sys] file that appears in the dialog.



Connecting to a Serial Port (COM Port)

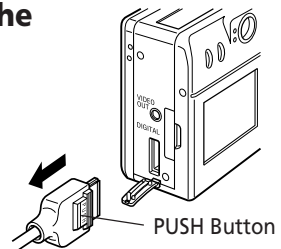
1. Shut down the computer and turn the camera's mode dial to the Off position.
2. Attach the supplied serial cable to a serial port on the computer and to the camera's DIGITAL terminal as shown below.
 - Please consult your computer's manual for the location of the serial port.



3. Turn on the computer and start Windows.

Precaution for Unplugging Cables from the DIGITAL Terminal

Always **press the [PUSH] button** on the connector to detach the cable from the camera's DIGITAL terminal.

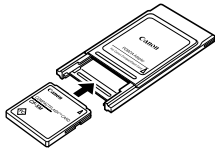


Connecting via a CF Card Reader or PC Card Slot

To load images directly from a CF card to a computer, eject the card from the camera, place it in a separately sold PC card adapter (PCMCIA card adapter) and insert the assembly into the PC card slot as shown below.

The adapter is not required if your computer is equipped with a CF card reader. Place the CF card directly into the reader.

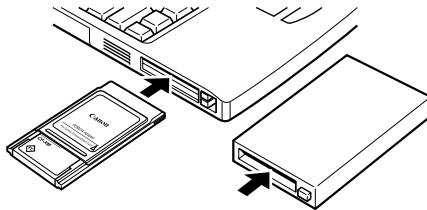
- 1.** Place the CF card in the PC card adapter.



Place CF Card in Adapter

- 2.** Insert the assembly into the computer's PC card slot or a PC card reader attached to the computer.

The requirements for the power being on or off when the PC card adapter is inserted differ according to the product. Please consult the manuals accompanying your equipment.



Insert into Slot

From Loading to Printing

This section provides a simple explanation of the procedures for using ZoomBrowser EX to load and print images. Please refer to the ZoomBrowser EX Help file for more details.

Auto Save and Batteries

When the camera is connected to a computer and powered by a 2CR5 lithium battery or Battery Pack NB-5H, a message will ask if you wish to remain connected after approximately five minutes without a camera control being accessed. If you select [No], the camera will shut down after approximately one minute (PC icon disappears from the display panel). You can restore the connection **by pressing the shutter button** (PC icon displays in the display panel).

Starting ZoomBrowser EX

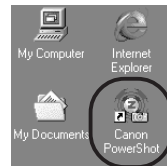
1. Open a connection between the camera and computer.

- Connecting to a USB Port (→ p. 8)
- Connecting to a Serial Port (→ p. 13)
- Connecting via a CF Card Reader or PC Card Slot (→ p. 14)

2. Turn the camera's mode dial to the position.

3. Start ZoomBrowser EX.

- Double-click the [Canon PowerShot] icon on the desktop.
- If the [Canon PowerShot] icon does not appear on the desktop, click the Windows [Start] button and select [Programs], [Canon PowerShot Utilities], [ZoomBrowser EX] and [ZoomBrowser EX].



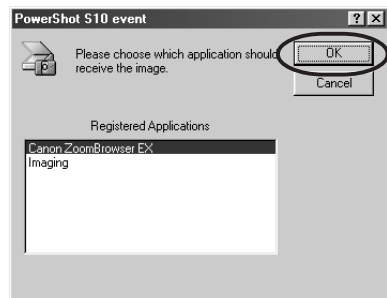
Canon PowerShot Icon

Quick Tips will automatically display. Read these tips to quickly understand operating procedures.

4. Use one of the three interfaces to display the camera window.

USB Interface

The [PowerShot S10 Event] or [PowerShot S20 Event] dialog will appear so that you can select an application to start when you connect the camera to a USB port. Select ZoomBrowser EX and click the [OK] button. ZoomBrowser EX will start and thumbnail images will display in the camera window. (→ p. 17)

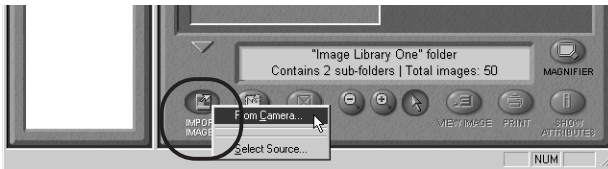


Settings for Applications that Start Automatically

- Follow the procedures below to start ZoomBrowser EX without first displaying the [PowerShot S10 Event] or [PowerShot S20 Event] dialog.
 1. Open the [My Computer] window while the camera is connected to the computer via the USB interface.
 2. Open the [Control Panel] and select [Scanners and Cameras] and either [PowerShot S10] or [PowerShot S20].
 3. Click the [Properties] button and display the [Events] tab.
 4. A list of applications registered for automatic starting will display. Remove the checks beside every program except for ZoomBrowser EX. Click the [OK] button. ZoomBrowser EX will now start automatically the next time you connect the camera. If the [Disable device events] option has a check mark, the automatic start will be turned off.

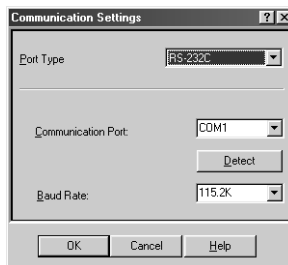
Serial Interface

Click the [IMPORT IMAGES] button and select [From Camera]. Thumbnail images will display in the camera window. (→ p. 17)



Having Trouble Connecting to the Computer?

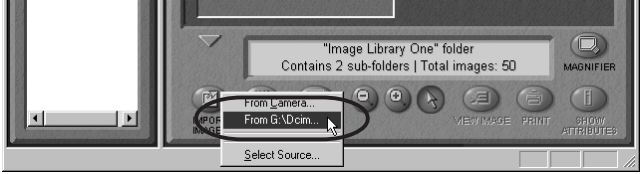
If the settings for the COM port are not correct, the [Communication Settings] dialog will display. (It will not display if you are connecting via a USB port.)



- Set the port type, port name and baud rate settings and click the [OK] button.
- Select [RS-232C] for the port type. For the port name, select the port to which the interface cable is connected. If you are uncertain about the port to which it is connected, click the [Detect] button.
- There is usually no need to change the baud rate setting from 115.2 K, but if you are having trouble with the connection, try a slower baud rate.

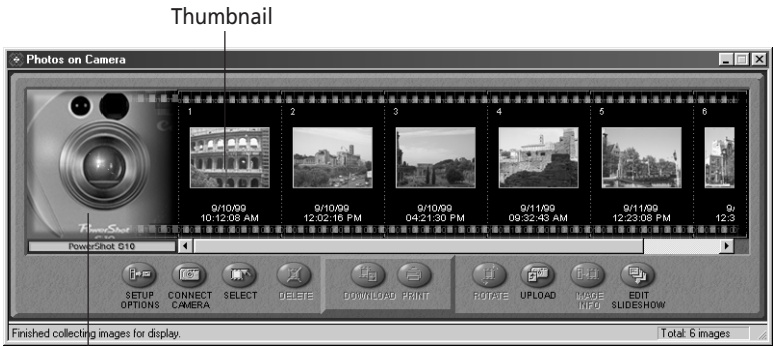
PC Card Reader or PC Card Slot Interface

Click the [IMPORT IMAGES] button and select [From Dcim]. Thumbnail images will display in the camera window.



ZoomBrowser EX Camera Window

The camera window will open when a connection to a camera or CF card is initiated. Thumbnail (small) images will display.



The image of the connected camera or CF card will display.

Loading Images from the Camera

1. Create a folder in which to save the images from the camera.
In the explorer view, right click the [My Images] folder. Select [Rename Folder] from the pop-up menu and input a folder name.



Explorer View

2. Select the renamed folder.
Click the renamed folder in the explorer view.



3. Select the images that you wish to download from the camera window and click the [DOWNLOAD] button.
Click the thumbnail(s) you wish to select.


Thumbnail



The downloaded images will display in the browser area.



Browser Area

To disconnect the camera, click the close box  at the upper right of the camera window. The camera window will close.

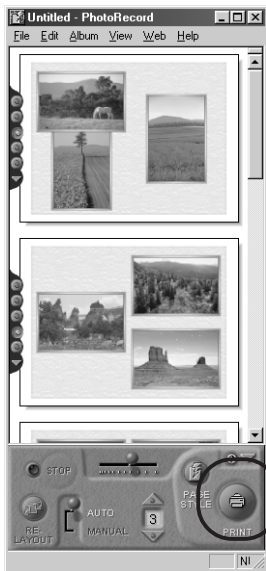
Printing Images

1. Select the image(s) you wish to print and click the [PRINT] button.



The PhotoRecord printing utility will start and the selected image(s) will automatically display in a page layout.

2. Adjust the print settings if you wish to change the page layout. Please refer to page 27 or the PhotoRecord Help file for instructions.
3. Click the PhotoRecord [PRINT] button.



The Print dialog will display.

4. Click the [OK] button to start printing.

Basic Procedures for Using ZoomBrowser EX

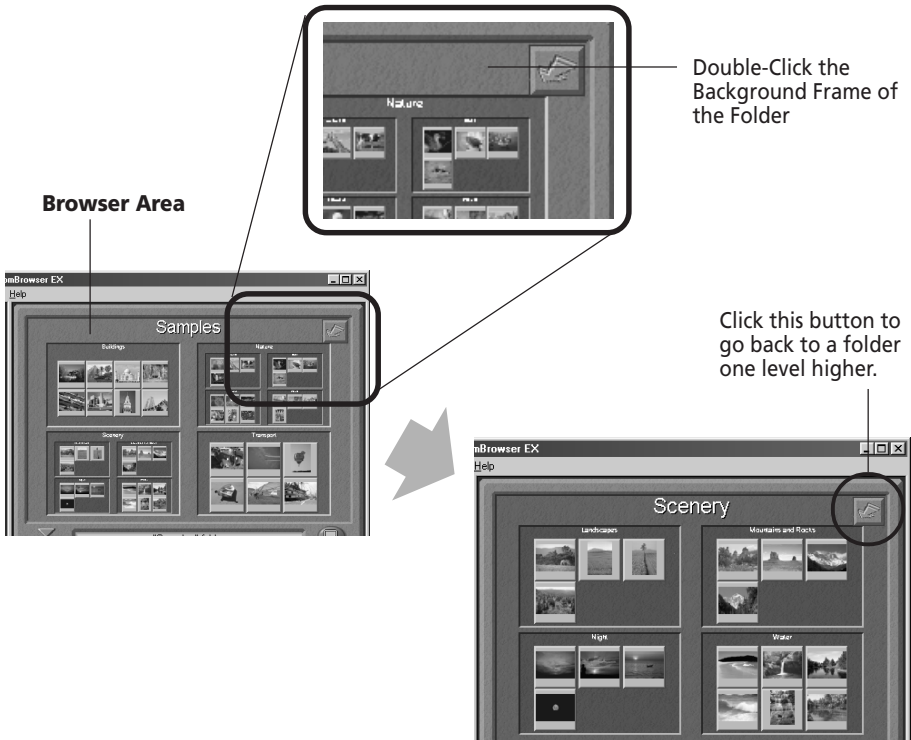
This section provides a simple explanation of the basic procedures for using ZoomBrowser EX. Please refer to the ZoomBrowser EX Help file for more details.

Displaying Images

Zooming Images In and Out

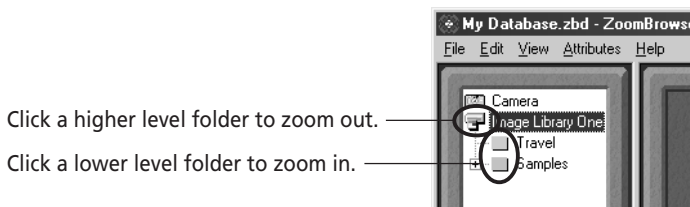
(a) Double-Clicking the Browser Area

Double-click the background frame of a folder to zoom it to fill the browser area.



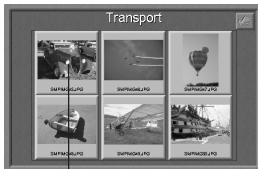
(b) Selecting a Folder in the Explorer View

You can also zoom a folder in or out with its icon selected in the explorer view.



Zooming a Single Image

Double-click an image in the browser area.



Double-Click the Image



Displaying Images in Chronological Order

Select a folder or some images, click the [View] menu and select [TimeTunnel].

- The selected image(s) will display in a time tunnel window.
- Please refer to the TimeTunnel Help file for more details on how to operate this function.



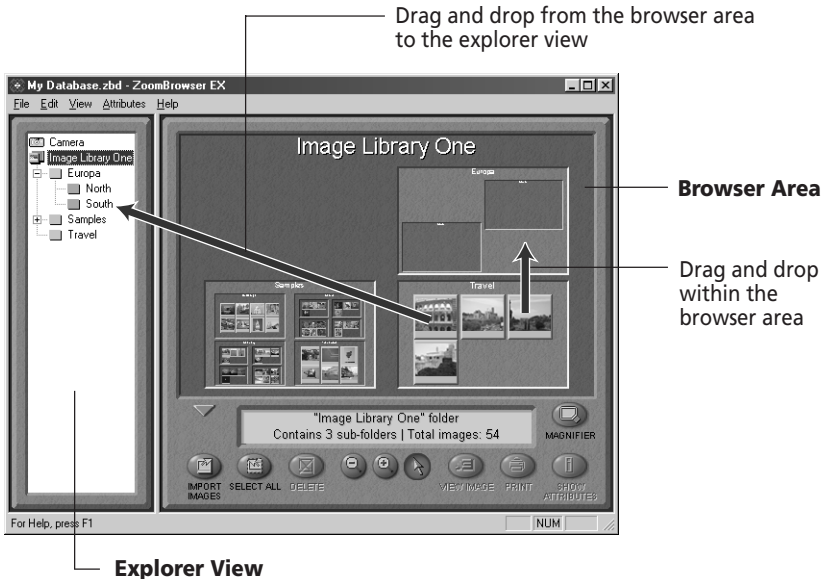
Drag the tab up or down to move through the time tunnel.

To return to the browser window, click this button.

Organizing Images

Changing the Image Location

You can change the location of an image by dragging and dropping it.



The [Image Library One] folder is located within the folder in which ZoomBrowser EX was installed. The explorer view displays files at levels below this folder.

Add a New Library Folder

- Adding a folder to the explorer view allows you to display the images in that folder and its subfolders in ZoomBrowser EX.
- Click the [File] menu, select [Add Image Library] and select the folder. The selected folder will appear in the explorer view as a new library.

Refresh the Contents of a Library

If you have used another program, such as Windows Explorer or Adobe PhotoDeluxe, to move or edit images that are registered with ZoomBrowser EX, you should click the [View] menu and select [Refresh Current Library].

Saving Computer Images to a CF Card in the Camera

- 1.** Open the camera window. (→ p. 15)
- 2.** Click the [UPLOAD] button in the camera window.
- 3.** Select the images from the computer and click the [Open] button.
The [Upload Images from Disk] dialog will display. Select the images you wish to save to the camera and click the [Open] button. The [Save to Camera] dialog will display.
- 4.** Select image size and resizing options and click the [Save to Camera] button.
The selected image will be saved onto the camera's CF card.

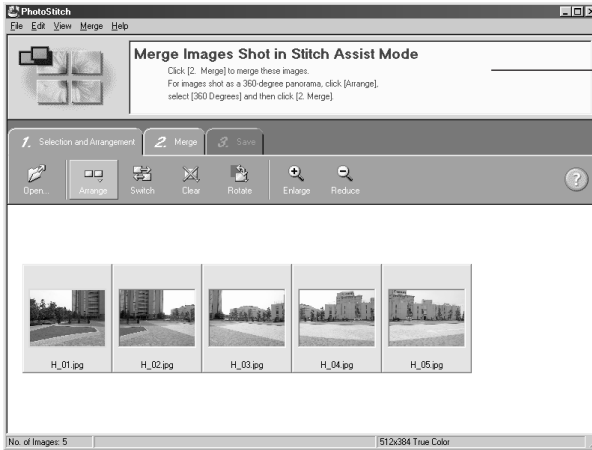
Editing Camera Slide Shows

- 1.** Open the camera window. (→ p. 15)
- 2.** Click the [EDIT SLIDESHOW] button.
The Edit Slide Show window will display.
 - The camera images will display on the left side. Images registered in the selected slide show will display on the right side.
 - Slide Shows 1 to 3 correspond to the numbers of the slide shows that can be shown with the camera.
- 3.** Drag and drop images from the area on the left to the area on the right to register them in the slide show.
You can drag images to change their order in the area on the right. This order corresponds to the order in which they replay.
- 4.** Click the [Save to Camera] button.
The slide show will be saved to the CF card in the camera.
- 5.** Click the [Exit] button on the toolbar.

Stitching Panoramas Together with PhotoStitch

To Merge Images Registered in ZoomBrowser EX

- You can merge a series of overlapping images into a single, seamless panorama.
- Select the images in the browser area, click the [Edit] menu and select [PhotoStitch]. The PhotoStitch program will start.
- Follow the instructions in the guidance window to merge the images.
- Please refer to the PhotoStitch Help file for more details.

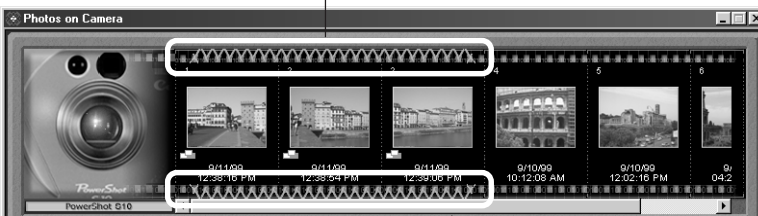


Follow the instructions to merge the images.

Images Shot in Stitch Assist Mode

PhotoStitch automatically arranges images shot with the Stitch Assist mode of PowerShot digital cameras into the correct order and orientation, making it easy to merge these images. Stitch Assist mode images display in the camera window as shown below.

Images shot in Stitch Assist mode have a green stitch mark.
Click the stitch mark to start PhotoStitch and merge those images.



Please see the camera's User Guide for instructions for shooting in Stitch Assist mode.

Editing and Applying Special Effects to Images

- 1.** Confirm that the Adobe PhotoDeluxe program has been installed. (Install it from the Adobe PhotoDeluxe CD-ROM)
- 2.** Select images from the browser area of ZoomBrowser EX.
- 3.** Click the [Edit] menu and select [Edit Image using Adobe PhotoDeluxe Home Edition]
Please refer to the Adobe PhotoDeluxe Help file and electronic guide (Getting Started.pdf) for instructions for this program.
- 4.** Edit and apply special effects to the image.
 - Once you have finished editing the image, click the [File] menu and select [Export] and [File format] and save the image.
 - ZoomBrowser EX supports the BMP, FlashPix, JPEG and TIFF file formats.
 - If you selected a folder registered in ZoomBrowser EX as the save location, please return to the ZoomBrowser EX window, click the [View] menu and select [Refresh Current Library] to update the thumbnail in ZoomBrowser EX.

Printing Images

Select the folder or image(s) for printing from the browser area or camera window and click the [PRINT] button to start the PhotoRecord program. The selected images will automatically display in a page layout. Please refer to the PhotoRecord Help file for more details.

Use these buttons to arrange the layout for each page.

Drag the images to change the layout.

Click this to stop importing images.

Slide this left to reduce the image, right to enlarge it.

Click this to switch between auto and manual layout mode.

Click this to display Help

Click this to redo the layouts for all pages.

Click this to display the Print dialog.

Click this to set the default number of images printed per page.

Click this to change the background design or paper orientation.

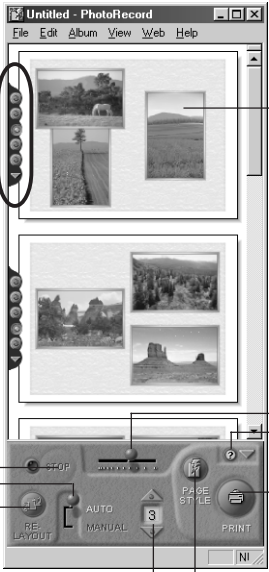
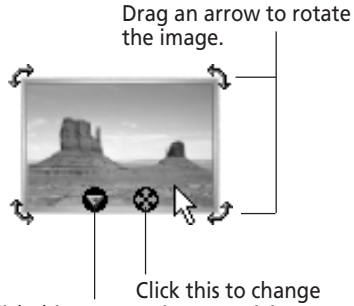
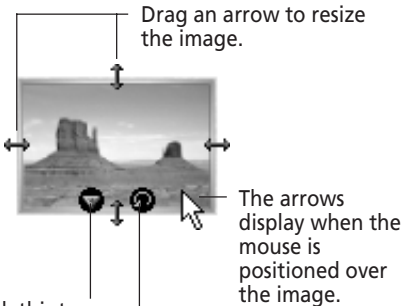


Image Resizing Mode

Image Rotating Mode



Click this to display a pop-up menu.

Click this to change to rotating mode.


Click this to display a pop-up menu.

Click this to change to image resizing mode.

Loading Images with TWAIN-Compliant Application Programs

This section explains how to load images into TWAIN-compliant application programs. Please read the manual for each application program for detailed instructions. This example uses Adobe PhotoDeluxe to illustrate typical procedures.

Starting the Software

1. Connect the camera to the computer.
 - Connecting to a USB Port (→ p. 8)
 - Connecting to a Serial Port (→ p. 13)
 - Connecting via a CF Card Reader or PC Card Slot (→ p. 14)
2. Start Adobe PhotoDeluxe.
3. Turn the camera's mode dial to the  position.

USB Interface

- The [PowerShot S10 Event] or [PowerShot S20 Event] dialog will display when you connect the camera to a USB port so that you can select which application to start.
- Select Adobe PhotoDeluxe Home Edition and click the [OK] button. The TWAIN Driver will appear.

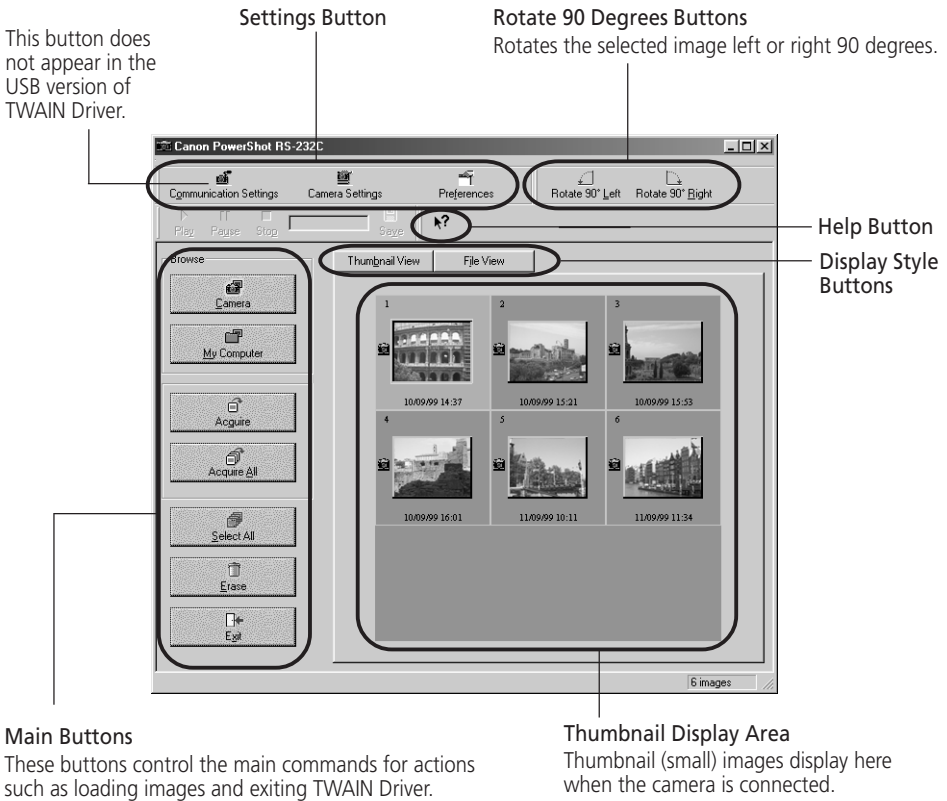
Serial Interface / PC Card Reader or PC Card Slot Interface

1. Click [Get & Fix Photo] at the upper left of the window.
2. Click [Get Photo] from the dialog that displays and select [Cameras].
3. Click the [1 Camera] tab.
 - Confirm that [Canon PowerShot RS-232C] is selected as the [Camera Models] option.
4. Click the [Open Camera] button.
 - TWAIN Driver will start.

Steps 5 and 6 are for Serial Interface Users Only

5. Click the [Communication Settings] button.
6. Set the port type, port name and baud rate settings, and click the [OK] button.
 - Select [RS-232C] for the port type.
 - For the port name, select the port to which the interface cable is connected. If you are uncertain about the port to which it is connected, click the [Detect] button.
 - There is usually no need to change the baud rate setting from 115.2 K, but if you are having trouble with the connection, try a slower baud rate.

Guide to the TWAIN Driver Window




Loading Images from the Camera

1. Click the [Camera] button.
 - Click the [My Computer] button if you are loading images directly from a CF card.
 - The images from the camera or CF card will display in the thumbnail display area.
2. Select an image and click the [Acquire] button.
The acquired image will appear in the window of Adobe PhotoDeluxe.

Troubleshooting the Driver Software Installation

Confirm the Following Conditions:

1. Is the camera connected to the computer correctly? (p. 7)
2. Is the camera's mode dial in the  position?
3. Is the battery charge sufficient?

You are recommended to use the AC adapter when connecting to a computer.

You will not be able to confirm the driver status if there is a problem with one of the items above.

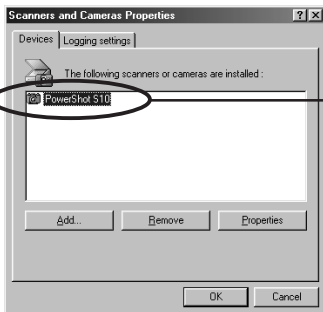
If you answered no to one of the above questions, try reinstalling the drivers with the procedures in the Installing the Driver Software section when the [Add New Hardware Wizard] appears.

Check to See That Installation Conditions are Met

- **Does the appropriate item, PowerShot S10 or PowerShot S20, appear in the Scanners and Cameras Properties dialog?**

Use the following procedures to display the dialog.

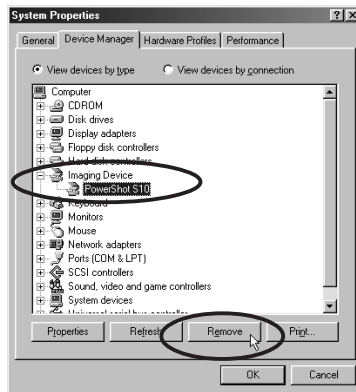
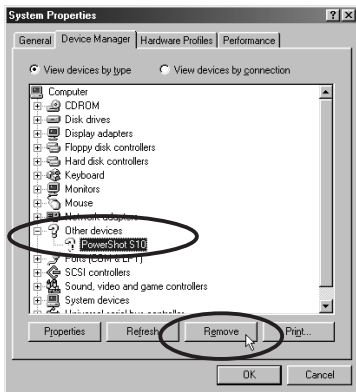
1. Click the Windows [Start] menu and select [Settings] and [Control Panel].
2. Double-click the [Scanners and Cameras] icon.



Confirm that the appropriate item, PowerShot S10 or PowerShot S20, is displayed. The names of scanners and other devices for which drivers have already been installed will show in this window.

What to Do if [PowerShot S10] or [PowerShot S20] Is Not in the Scanners and Cameras Properties Device List or if the [Scanners and Cameras] Icon Is Not in the Control Panel

1. Open the [System Properties] dialog and check the [Device Manager] tab.
 1. Double-click the [System] icon in the Control Panel.
 2. Click the [Device Manager] tab.
2. Check the [Other devices] or [Imaging Devices] categories for either the [PowerShot S10] or [PowerShot S20] item. Delete it with the following procedures.



1. Select either the [PowerShot S10] or [PowerShot S20] item and click the [Remove] button.
2. Click the [OK] button on the confirmation dialog.
3. Click the [OK] button to close the System Properties dialog.

Delete all copies if the [PowerShot S10] or [PowerShot S20] item appears in more than one category, such as the [Imaging Devices] and [Other Devices], or if it is duplicated in the [Other Devices].

3. Double-click the [My Computer] icon on the Windows desktop.



4. Double-click the [C:] hard disk drive icon to open it.



5. Double-click the [Windows] folder to open it.



6. Double-click the [Inf] folder to open it.

If you do not spot the [Inf] folder in the Windows folder, click the [View] menu and select [Folder Options], the [View] tab and the [Show All Files] option. (→ p. 33)



7. Find and delete the [Drvdata.bin] and [Drvidx.bin] files.



The [Inf] folder contains numerous files. Ensure that you double-check the file names before you delete any files.


8. Double-click the [Other] folder within the [Inf] folder to open it.



9. Find and delete the [Canon.IncCanon_DC] file.

Skip this step if this file is not present in the [Other] folder within the [Inf] folder.



10. Reconnect the camera to the computer and reset its mode dial to the  position.

The [Add New Hardware Wizard] will appear.

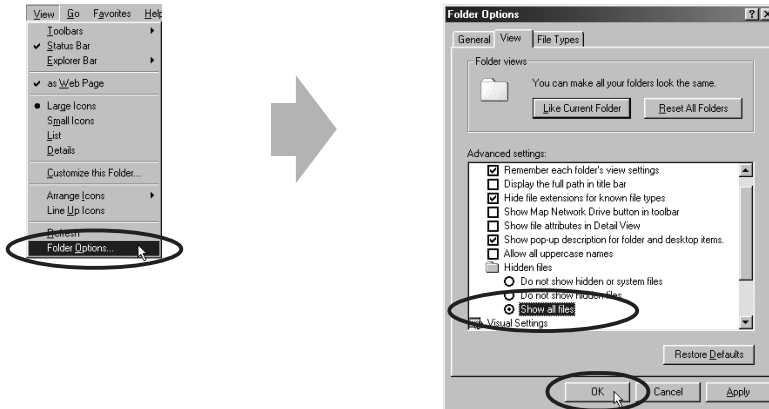
11. Install the driver software according to the procedures in the Installing the Driver Software section starting on page 10.

What to Do if the [Inf] Folder Does Not Appear in the [Windows] Folder

Follow the procedures below to select the [Show all files] option.

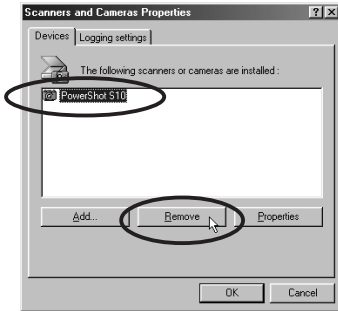
- 1) Click the [View] menu and select [Folder Options].
- 2) Click the [View] tab.
- 3) Click the [Show all files] option in the Hidden files section of the Advanced settings list.
- 4) Click the [OK] button to close the [Folder Options] dialog.

This will display the folders and files that were not previously visible.



What to Do if [PowerShot S10] or [PowerShot S20] Appears in the Scanners and Cameras Properties Device List

1. Select the [PowerShot S10] or [PowerShot S20] name in the Scanners and Cameras Properties device list and click the [Remove] button.



2. Click the [OK] button and close the [Scanners and Cameras Properties] dialog.
3. Using Steps 3 to 11 on starting on page 31, delete the [Drvdata.bin], [Drvidx.bin] and [Canon.IncCanon_DC] items, and reinstall the driver software.

Using the Software on the Macintosh Platform

Introducing the Software	36
System Requirements.....	38
Installing the Software	39
Connecting the Camera to a Computer	40
Connecting to a USB Port	41
Connecting to a Serial Port (Printer or Modem Port)	43
Connecting via a CF Card Reader or PC Card Slot	44
From Loading to Printing	45
Basic Procedures for Using PowerShot Browser	50
Displaying Images	50
Organizing Images.....	51
Saving Computer Images to a CF Card in the Camera	52
Editing Camera Slide Shows	52
Stitching Panoramas Together with PhotoStitch.....	53
Editing and Applying Special Effects to Images	54
Adding Sound Files to Images.....	54
Loading Images with Plug-In Compliant Application Programs (Adobe PhotoDeluxe, Photoshop, etc.)	55
Troubleshooting the Computer Connection	58
Customer Support	59

Introducing the Software

This section introduces the powerful software programs provided on the supplied CD-ROM for Macintosh computers.



PowerShot Solution Disk

PowerShot Browser

To load PowerShot S10/S20 images, start PowerShot Browser.

PowerShot S10/S20 Connection Functions

(Also effective for CF card readers or PC card readers)

- Displays the camera images.
- Downloads camera images to the computer.
- Saves computer images to a CF card in the camera.
- Edits slide shows for replay by the camera.
- Automatically starts and displays camera images when the camera is connected to a USB port.

Image File Management Functions

- Displays, moves, copies or deletes images stored on computer disks.
- Displays the files in a specified folder.
- Displays files in chronological order in a window that looks like a time tunnel.

Prints Images

- Prints a specified number of images on a single page.

Supports PhotoStitch Panoramas

- Allows you to select camera images or images registered with PowerShot Browser and start PhotoStitch to merge a series of images into a panorama in a few simple steps.

Supports the Adobe PhotoDeluxe Photo Retouching Program

- Starts the Adobe PhotoDeluxe photo retouching program so you can edit and apply special effects to your images.

PhotoStitch

- Automatically arranges images shot in Stitch Assist mode into the correct order and effortlessly merges them.
- Merges any number of images horizontally or vertically, or in a matrix format.
- Makes images with straight lines appear natural not crooked when merged (Select the Wide display format).
- A 360 degrees scene shot in several frames can be merged into a 360 degrees image and saved in the QuickTime VR format, making it appear as if you were standing in the middle of the image looking about in all directions.

PowerShot Plug-In Module

This is the driver utility required to load images from a camera into a Plug-In compliant application program, such as Adobe PhotoDeluxe or Photoshop. Plug-In Module cannot be used as a stand-alone software program.

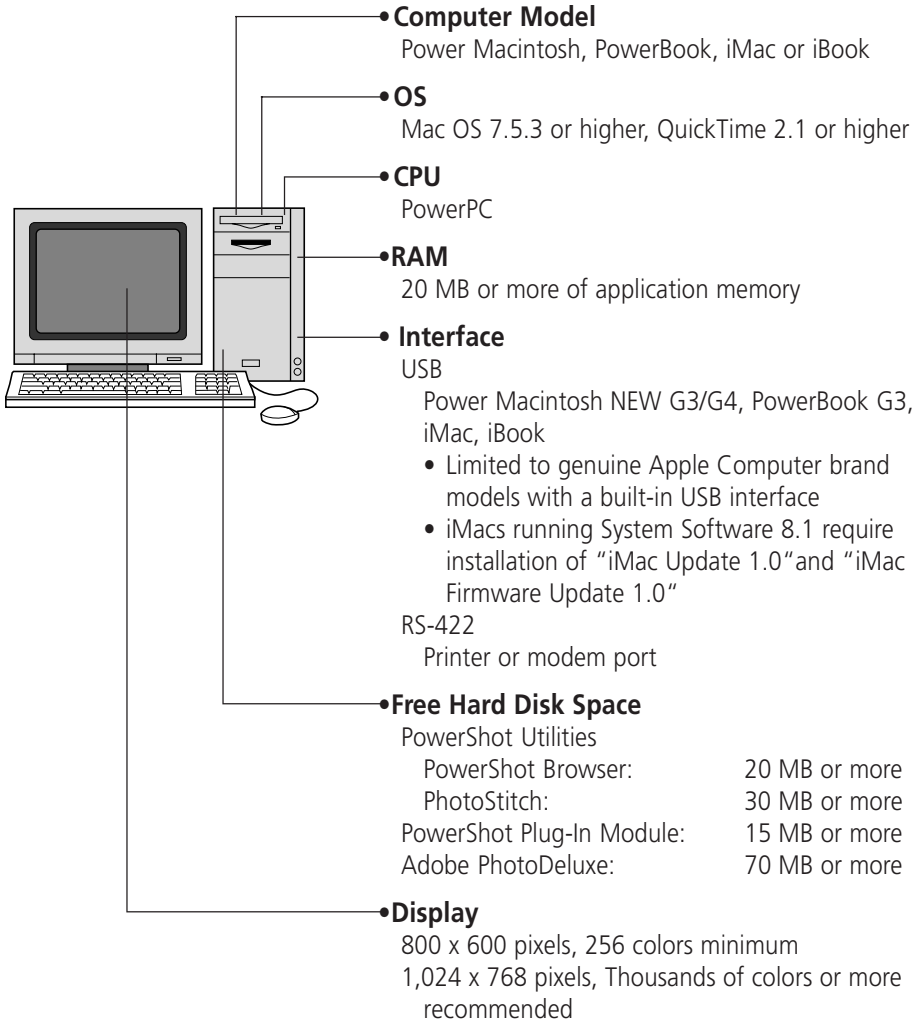


Adobe PhotoDeluxe (separate CD-ROM)

- Allows you to edit images and effortlessly create greeting cards, birthday cards and calendars.

System Requirements

The following system requirements must be met to install and operate the software.



- A CD-ROM drive is required to install the software.
- Plug-In Module 3.0 is compatible with Adobe Photoshop Ver. 3.0 or higher.
- QuickTime 2.5 or higher and the QuickTime VR Extension 2.0.1 or higher are required to save images in the QuickTime VR format that have been merged in PhotoStitch.

Installing the Software

Installing from the PowerShot Solution Disk

1. Close any application programs that are running.
2. Place the supplied Solution Disk in the CD-ROM drive.
3. Double-click the [CD-ROM] icon.

4. Double-click the [PowerShot Installer] icon.

The installer panel will display.



5. Click [Software Installation] and Select the software programs you wish to install.
 - Select [Easy Install] for a typical installation.
 - Select [Custom Install] if you wish to install only the minimum required programs.

Software Installed with the Easy Install Option

PowerShot Browser, PhotoStitch, PowerShot Plug-In Module

6. Select a folder and proceed according to the on-screen instructions.
7. Restart the computer after the installation is complete if prompted by a message.

Installing Adobe PhotoDeluxe

For installation instructions, please see the electronic guide (Getting Started.pdf) contained in the [Open Me First!] folder on the Adobe PhotoDeluxe CD-ROM.

The serial number shown during installation will be required for the user registration process.

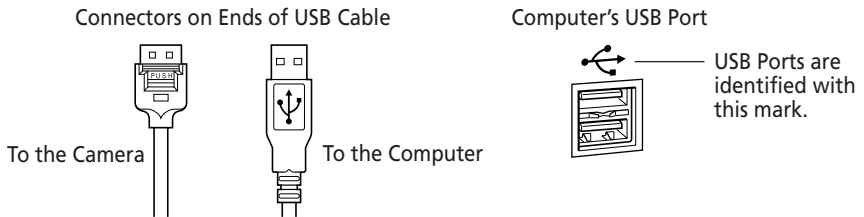
Connecting the Camera to a Computer

There are three interfaces that can be used to connect the camera to a computer. Once a connection is established using one of the three interfaces, you can start the software and begin to load the camera images. (→ p. 45 or 55)

Connecting to a USB Port (→ p. 41)

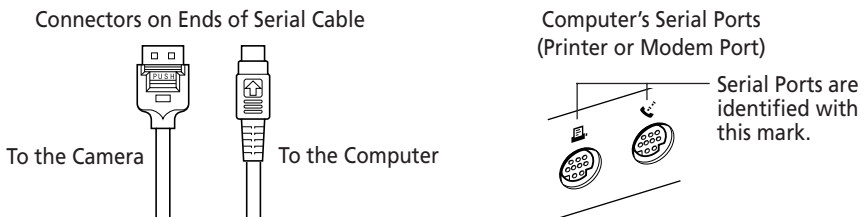
If your computer is equipped with a USB port such as that shown below, you can connect the camera to it with the supplied USB cable.

- The USB interface transfers data more rapidly than the serial interface and can start the image loading software automatically.



Connecting to a Serial Port (Printer or Modem Port) (→ p. 43)

If your computer is equipped with one of the serial ports shown below, you can connect the camera with the supplied Macintosh cable.



Connecting via a CF Card Reader or PC Card Slot (→ p. 44)

If your computer is equipped with a CF card reader or PC card slot, you can place the camera's CF card into either device to establish a direct connection.

Connecting to a USB Port

Requirements for the USB Interface

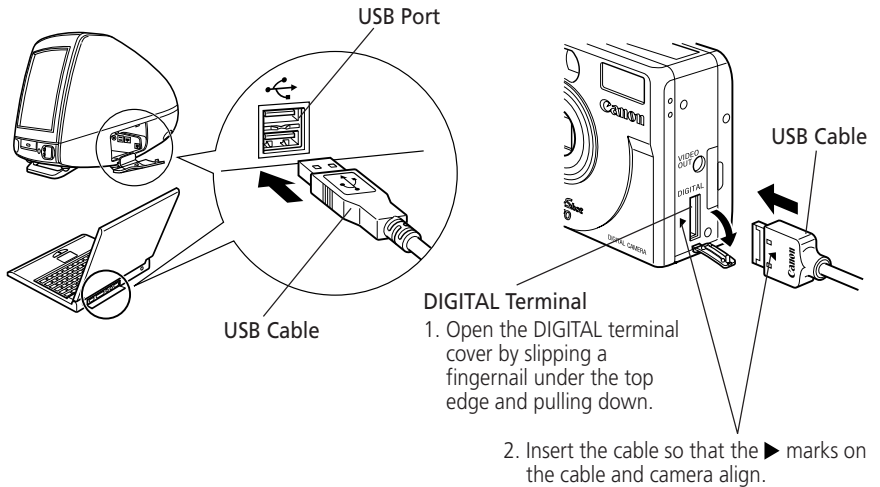
- Use of the USB interface for connecting the camera is limited to the Power Macintosh New G3/G4, PowerBook G3, iMac and iBook series with built-in USB connectors.
- Connect the USB cable directly to one of the computer's main USB ports. The interface may not function correctly if the camera is connected via a USB HUB.
- The interface may not function correctly while other USB devices, excluding USB mice and keyboards, are connected. If this problem arises, detach the camera and the other devices, and reconnect the camera only.

Important

Please do not place your Macintosh computer into sleep mode while this camera is connected to its USB port. If the computer is placed into sleep mode while the camera is connected to the USB port, do NOT disconnect the USB cable from the camera or computer. Try to revive the computer. If the USB cable is detached while the computer is in sleep mode, some Macintosh models may not return to active mode correctly. For instructions regarding the sleep mode, please consult the manual accompanying your computer.

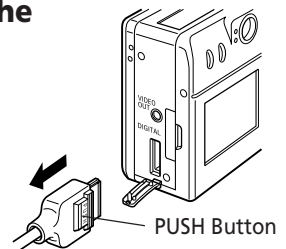
1. Attach the supplied USB cable to a USB port directly on the computer and to the DIGITAL terminal on the PowerShot S10/S20 as shown below.

- There is no need to turn the camera or computer power off when attaching or detaching the USB cables.
- Please consult your computer's manual for the location of the USB ports.
- The camera can be connected to any USB port on computers that feature more than one.



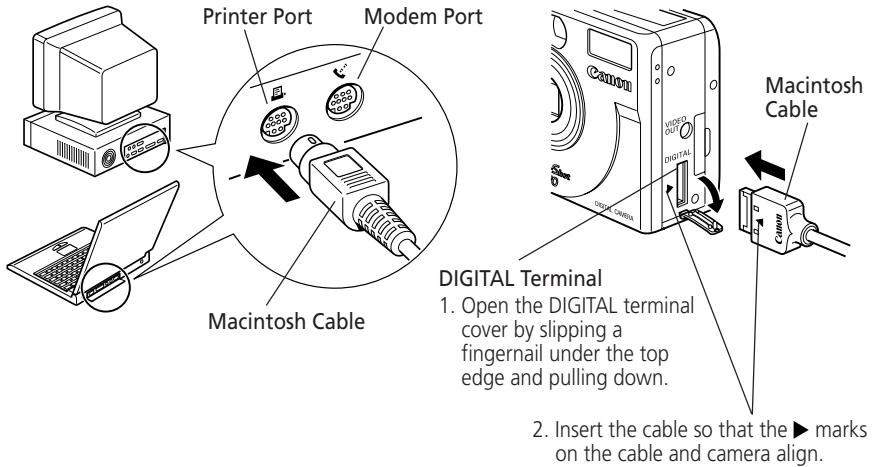
Precaution for Unplugging Cables from the DIGITAL Terminal

Always **press the [PUSH] button** on the connector to detach the cable from the camera's DIGITAL terminal.



Connecting to a Serial Port (Printer or Modem Port)

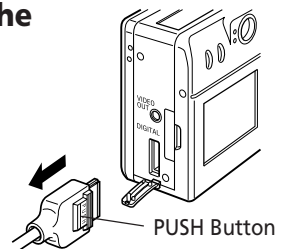
1. Shut down the computer and turn the camera's mode dial to the Off position.
2. Attach the supplied Macintosh cable to the printer or modem port on the computer and to the camera's DIGITAL terminal as shown below.
 - Please consult your computer's manual for the port locations.



3. Turn on the computer.

Precaution for Unplugging Cables from the DIGITAL Terminal

Always **press the [PUSH] button** on the connector to detach the cable from the camera's DIGITAL terminal.

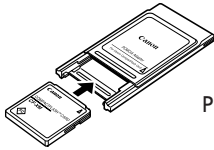


Connecting via a CF Card Reader or PC Card Slot

To load images directly from a CF card to a computer, eject the card from the camera, place it in a separately sold PC card adapter (PCMCIA card adapter) and insert the assembly into the PC card slot as shown below.

The adapter is not required if your computer is equipped with a CF card reader. Place the CF card directly into the reader.

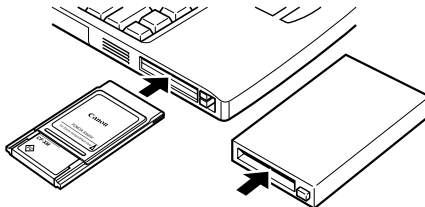
1. Place the CF card in the PC card adapter.



Place CF Card in Adapter

2. Insert the assembly into the computer's PC card slot or a PC card reader attached to the computer.

The requirements for the power being on or off when the PC card adapter is inserted differ according to the product. Please consult the manuals accompanying your equipment.



Insert into Slot

From Loading to Printing

This section provides a simple explanation of the procedures for using PowerShot Browser to load and print images. Please refer to the PowerShot Browser Help file for more details.

Auto Save and Batteries

When the camera is connected to a computer and powered by a 2CR5 lithium battery or Battery Pack NB-5H, a message will ask if you wish to remain connected after approximately five minutes without a camera control being accessed. If you select [No], the camera will shut down after approximately one minute (PC icon disappears from the display panel). You can restore the connection **by pressing the shutter button** (PC icon displays in the display panel).

Starting PowerShot Browser

1. Open a connection between the camera and computer.

- Connecting to a USB Port (→ p. 41)
- Connecting to a Serial Port (→ p. 43)
- Connecting via a CF Card Reader or PC Card Slot (→ p. 44)

2. Turn the camera's mode dial to the position.

For Serial Interface Users

- If you are connected to an AppleTalk network via the printer or modem port, choose the  (Apple) menu, select [Chooser] and set AppleTalk to [Inactive].

3. Start PowerShot Browser.

- Double-click the [Canon PowerShot] icon on the desktop.
- If the Canon PowerShot icon does not appear on the desktop, look in the folder in which you installed the programs and double-click [PowerShot Folder], [PowerShot Browser Folder] and the [PowerShot Browser] icon.



Canon PowerShot


————— Canon PowerShot Icon

4. Use one of the three interfaces to display the camera window.

USB Interface

When you connect the camera to the computer, PowerShot Browser will automatically start and display its [Communication Settings] dialog. Confirm that the [USB port] option and either the [PowerShot S10] or [PowerShot S20] option are selected. Click the [Set] button. Thumbnail images will display in the camera window. (→ p. 47)

- If you don't want PowerShot Browser to start automatically, change the settings with the following procedures.

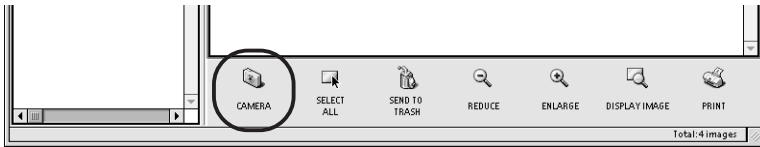
1. Choose Control Panels from the  (Apple) menu and select [Canon USB Camera]. The [Settings for USB connection] dialog will display.
2. Click the [The application program below will start.] option to clear the check mark.
3. Click the close box at the upper left to close the dialog. PowerShot Browser will cease to start automatically thereafter.

Clear the check mark to stop PowerShot Browser from automatically starting.



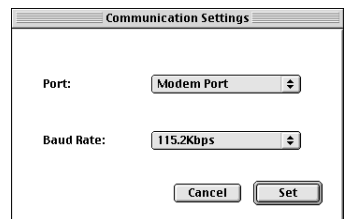
Serial Interface

Click the [CAMERA] button. Thumbnail images will display in the camera window. (→ p. 51)



Having Trouble Connecting to the Computer?

If the settings for the connection port are not correct, the [Communication Settings] dialog will display. (It will not display if you are connecting via a USB port.)

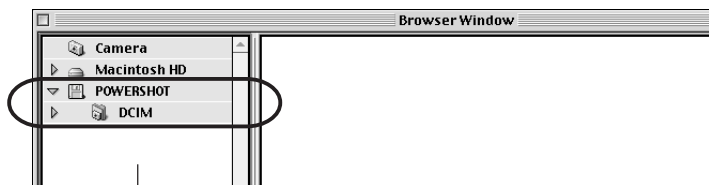


- Set the connection port and baud rate settings and click the [Set] button.
- Select the port to which the camera is attached.
- There is usually no need to change the baud rate setting from 115.2 K, but if you are having trouble with the connection, try a slower baud rate.

PC Card Reader or PC Card Slot Interface

Click the arrow to the left of PC Card folder in the explorer view to display the subfolders and double-click [DCIM].

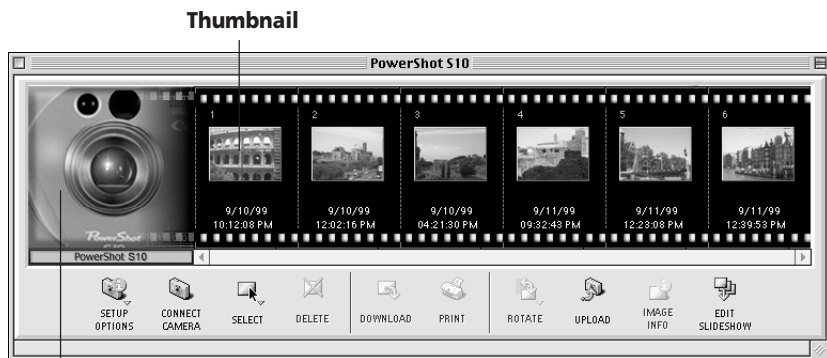
Thumbnail images will display in the Camera window. (→ p. 47)



Explorer View

PowerShot Browser Camera Window

The camera window will open when a connection to a camera or CF card is initiated. Thumbnail (small) images will display.

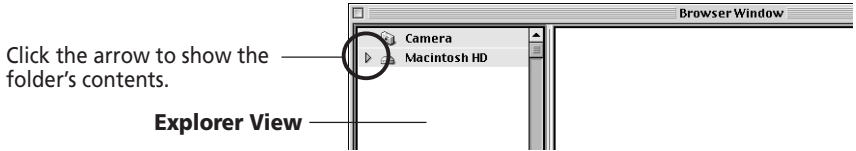


The image of the connected camera or CF card will display.

Loading Images from the Camera

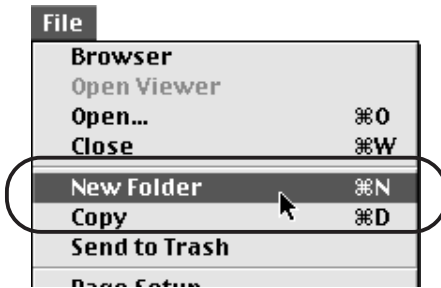
1. Select the [PowerShot Browser Folder].

Click the arrow to the left of the folder in the explorer view and display the contents of the [PowerShot Browser Folder].



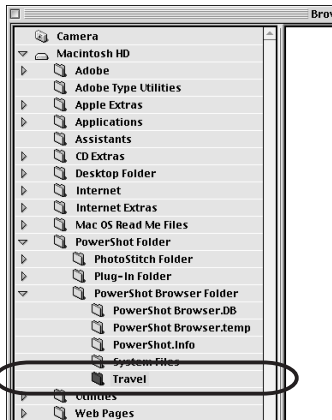
2. Create a new folder within the PowerShot Browser Folder.

Click the [PowerShot Browser Folder], choose the [File] menu and select [New Folder]. A folder with the name [Untitled Folder] will be created. Click the folder and change the name of this folder as you wish.



3. Select the folder you just created.

Click the newly created folder in the explorer view.

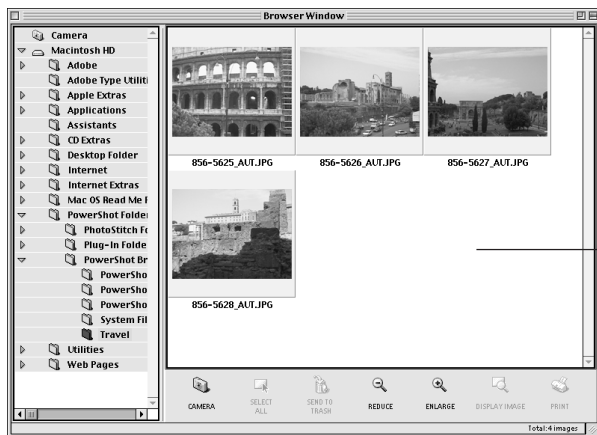



4. Select the images that you wish to download from the camera window and click the [DOWNLOAD] button.

Click the thumbnail(s) you wish to select.



The downloaded images will display in the browser area.



To disconnect the camera, click the close box  at the upper left of the camera window. The camera window will close.

Printing Images

1. Select the image(s) you wish to print and click the [PRINT] button.





2. Input a title into the header space, select the number of images you wish to print on one page and click the [PRINT] button.

Basic Procedures for Using PowerShot Browser

This section provides a simple explanation of the basic procedures for using PowerShot Browser. Please refer to the PowerShot Browser Help file for more details.

Displaying Images

Zooming Images In and Out

You can zoom images in and out by clicking the  (REDUCE) or  (ENLARGE) button.

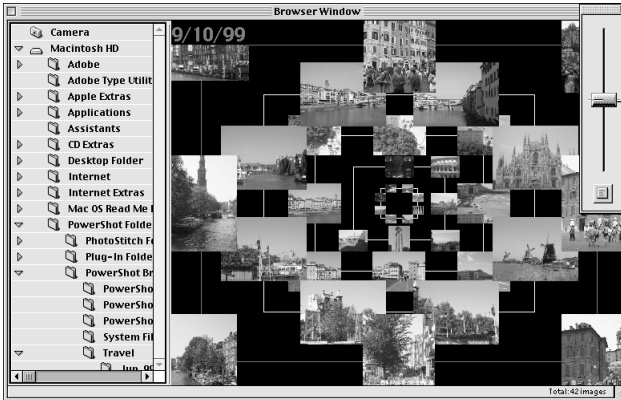
Zooming a Single Image

Double-click an image in the browser area.

Displaying Images in Chronological Order

Select a folder, choose the [Browser] menu and select [Switch to TimeTunnel].

- The selected image(s) will display in a time tunnel window.
- Please refer to the TimeTunnel Help file for more details on how to operate this function.



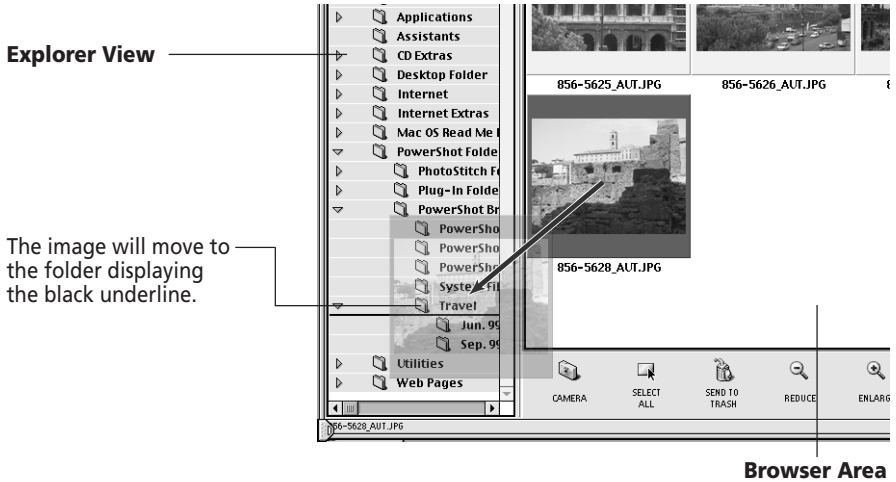
Drag the tab up or down to move through the time tunnel.

To return to the browser window, choose the [TimeTunnel] menu and select [Switch to Browser View].

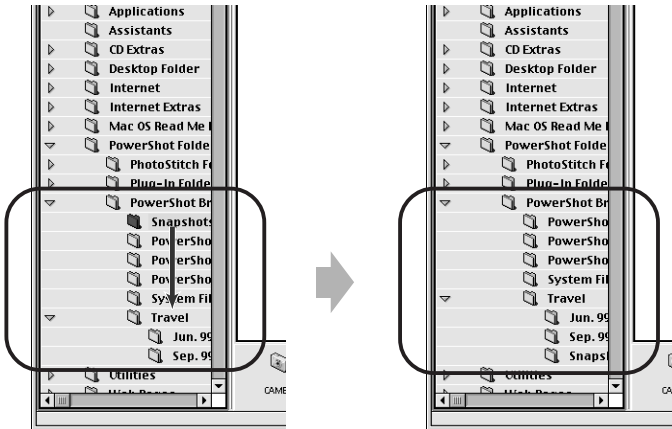
Organizing Images

Changing the Image Location

(a) Dragging an Image from the Browser Area and Dropping It to the Explorer View.



(b) Drag and Drop a Folder within the Explorer View.



Refresh the Contents of the Browser Area

If you have used the Macintosh Finder or another program to move or edit images that are registered with PowerShot Browser, you should click the [Display] menu and select [Refresh].

Saving Computer Images to a CF Card in the Camera

- 1.** Open the camera window. (→ p. 46)
- 2.** Click the [UPLOAD] button in the camera window.
- 3.** Select the images from the computer and click the [Open] button.
Select the images you wish to save to the camera in the dialog that appears and click the [Open] button.
The [Save to Camera] dialog will display.
- 4.** Select image size and resizing options and click the [Save to Camera] button.
The selected image will be saved onto the camera's CF card.

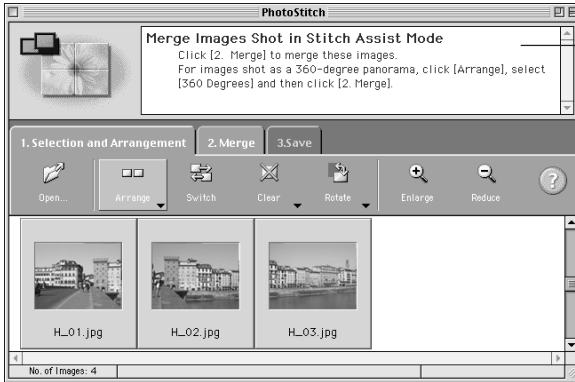
Editing Camera Slide Shows

- 1.** Open the camera window. (→ p. 46)
- 2.** Click the [EDIT SLIDESHOW] button.
The SlideShowMaker window will display.
 - The camera images will display on the left side. Images registered in the selected slide show will display on the right side.
 - Slide Shows 1 to 3 correspond to the numbers of the slide shows that can be shown with the camera.
- 3.** Drag and drop images from the area on the left to the area on the right to register them in the slide show.
You can drag images to change their order in the area on the right. This order corresponds to the order in which they replay.
- 4.** Click the [Save to Camera] button.
The slide show will be saved to the CF card in the camera.
- 5.** Click the [Quit] button on the toolbar.

Stitching Panoramas Together with PhotoStitch

To Merge Images Registered in PowerShot Browser

- You can merge a series of overlapping images into a single, seamless panorama.
- Select the images in the browser area, choose the [Edit] menu and select [PhotoStitch]. The PhotoStitch program will start.
- Follow the instructions in the guidance window to merge the images.
- Please refer to the PhotoStitch Help file for more details.

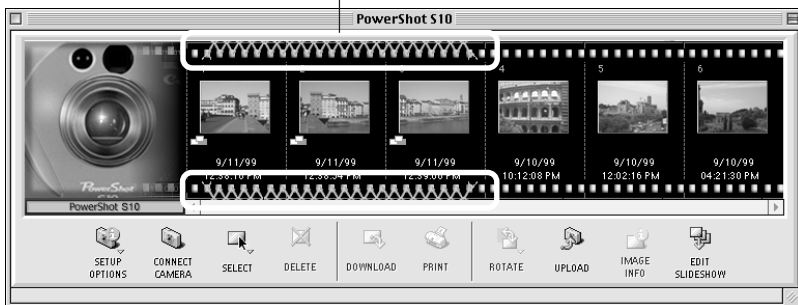


Follow the instructions to merge the images.

Images Shot in Stitch Assist Mode

PhotoStitch automatically arranges images shot with the Stitch Assist mode of PowerShot digital cameras into the correct order and orientation, making it easy to merge these images. Stitch Assist mode images display in the camera window as shown below.

Images shot in Stitch Assist mode have a green stitch mark.
Click the stitch mark to start PhotoStitch and merge those images.



Please see the camera's User Guide for instructions for shooting in Stitch Assist mode.

Editing and Applying Special Effects to Images

- 1.** Confirm that the Adobe PhotoDeluxe program has been installed. (Install it from the Adobe PhotoDeluxe CD-ROM)
- 2.** Select images from the browser area of PowerShot Browser.
- 3.** Click the [Edit] menu and select [Adobe PhotoDeluxe].
Please refer to the Adobe PhotoDeluxe Help file and electronic guide (Getting Started.pdf) contained in the [Open Me First!] folder on the Adobe PhotoDeluxe CD-ROM.
- 4.** Edit and apply special effects to the image.
 - Once you have finished editing the image, click the [File] menu and select [Send to] and [File Format] and save the image.
 - PowerShot Browser supports the BMP, JPEG, PICT and TIFF file formats.
 - Click the [Display] menu and select [Refresh] to update the folder data.

Adding Sound Files to Images

If your computer has a microphone, you can attach a sound annotation to an image by clicking it in the browser area, choosing the [Sound] menu and selecting [Record].

Loading Images with Plug-In Compliant Application Programs

This section explains how to load images with Plug-In compliant application programs. Please read the manual for each application program for detailed instructions. This example uses Adobe PhotoDeluxe to illustrate typical procedures.


Installing the Plug-In Module

1. Open the [PowerShot Folder] and [Plug-In Folder].
2. Copy the [Canon PowerShot] file to the [Acquire/Export] folder, which can be found by opening the [Adobe PhotoDeluxe] and [Plug-ins] folders.

Starting the Software

If PowerShot Browser has been installed, it will start automatically when the camera is connected to the computer via a USB port. To stop PowerShot Browser from starting automatically, turn off the automatic start function using the procedures described in the USB Interface topic on page 46.

1. Connect the camera to the computer.
 - Connecting to a USB Port (→ p. 41)
 - Connecting to a Serial Port (→ p. 43)
 - Connecting via a CF Card Reader or PC Card Slot (→ p. 44)


2. Turn the camera's mode dial to the  position.

For USB Interface Users

- PowerShot Browser may automatically start when you connect the camera to the computer. Since you will be using the plug-in compliant application to load images, you should close PowerShot Browser.
- To prevent PowerShot Browser from automatically starting, see the procedures on page 46.

For Serial Interface users

- If you are connected to an AppleTalk network via the printer or modem port, choose the  (Apple) menu, select [Chooser] and set AppleTalk to [Inactive].

3. Start Adobe PhotoDeluxe.
 1. Click the [Get Photo] button at the upper left of the window.
 2. Click [Get Photo] from the tab that displays and select [Cameras].
 3. In the [Select Input Source] dialog, select [Canon PowerShot] and click the [OK] button.
 - This step is not required from the second time onward.
 4. Click the [Camera] icon.
 - The Plug-In Module will start.
 5. Click the  icon and set the communication settings.

USB Interface

Confirm that the [USB Port] and either [PowerShot S10] or [PowerShot S20] have been selected and click the [Set] button.

Serial Interface

Select the port and baud rate settings, and click the [Set] button.

- Select the port to which the camera is attached.
- There is usually no need to change the baud rate setting from 115.2 K, but if you are having trouble with the connection, try a slower baud rate.

What to Do if the [PowerShot Browser not found] Dialog Appears


If you install only the PowerShot Plug-In Module without PowerShot Browser, the [PowerShot Browser not found] dialog may display. If this



happens, use the following procedures to prevent PowerShot Browser from attempting to start automatically.

- 1) Click the [OK] button on the [PowerShot Browser not found] dialog.
- 2) In the [Settings for USB connection] dialog, click the [The application program below will start.] option to clear the check mark.
- 3) Close the [Settings for USB connection] dialog.

This will prevent the [PowerShot Browser not found] dialog from appearing again when the camera is connected.

* The [Settings for USB connection] dialog can also be opened by choosing the  (Apple) menu and selecting [Control Panels] and [Canon USB Camera]. (→ p. 46)

Click here to close the dialog.

Click here to clear the check mark.



Guide to the Plug-In Module Window

Display Style Button

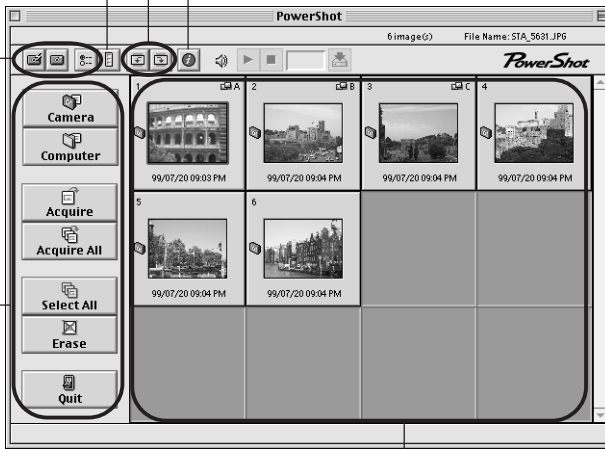
Settings Buttons

Use these buttons to set the communications and preference settings for the camera.

Rotate 90 Degrees Buttons

Rotates selected image left or right 90 degrees.

Image Information Button



Main Buttons

These buttons control the main commands for actions such as loading images and quitting Plug-In Module.

Thumbnail Display Area

Thumbnail (small) images display here when the camera is connected.

Loading Images from the Camera


1. Click the [Camera] button.
 - Click the [Computer] button if you are loading images directly from a CF card.
 - The images from the camera or CF card will display in the thumbnail display area.
2. Select an image and click the [Acquire] button.
3. In the [Untitled] column of PhotoDeluxe, input a file name and click the [Save] button.

The thumbnails will appear in the My Photos window at the lower right of the Adobe PhotoDeluxe window.
4. Click the [Quit] button.

You can display an image at a larger size by double-clicking it in the My Photos window.

Troubleshooting the Computer Connection

Double-Check:

1. Is the cable between the camera and computer correctly attached?
(→ p. 7 or p. 40)
2. Is the camera's mode dial turned to the  position? (→ p. 10 or p. 45)
3. Is the battery charge sufficient?
You are recommended to use the AC adapter when connecting to a computer.

If the above conditions are met, check the following items.

- **Confirm that the port selected in the Communication Settings dialog is the one to which the camera is connected. Please see the respective pages below.**

Windows Platform (→ p. 16)

Macintosh Platform (→ p. 46)

- **If there is more than one port, try connecting via another (different) port.**
- **Set the baud rate to a lower setting in the [Communication Settings] dialog.**
- **If you are using LocalTalk, set AppleTalk to [Inactive].**
(→ p. 45 Step 2, p. 55 Step 2)

If the problem persists after implementing the suggestions above, please contact a Canon Customer Support Help Desk.

Customer Support

Canon Customer Support

Canon Inc.

30-2 Shimomaruko 3-chome, Ohta-ku, Tokyo
146-8501, Japan

NORTH AMERICA

Canon U.S.A., Inc.

Canon Customer Care Center
Phone (US): 1-800-828-4040 (Available Mon. - Fri., 9 AM to 8 PM Eastern Time)

Canon Canada Inc.

Phone (Canada): 1-800-OK-CANON (1-800-652-2666) (24 hours/day, 7 days/week)

EUROPE

Europe, Africa & Middle East

Canon Europa N.V.

PO Box 2262, 1180 EG Amstelveen, The Netherlands

Canon (UK) Ltd.

Helpdesk
Tel No.: 08705 143 723 (Calls may be recorded.)
Fax No.: 08705 143 340 BBS No.: 08705 143 350

Canon France S.A.

Hotline : 01.41.99.70.70
Tél : 01.41.99.77.77 Télécopie : 01.41.99.79.51

Canon Photo Vidéo France S.A.

Hotline : 01.49.04.01.00 Télécopie : 01.49.04.01.01

Canon Deutschland GmbH

Canon-Hotline-Service
Customer-Support: (02151) 349-555 Telefax: (02151) 349-588
Info-Desk Tel: (02151) 349-566 Info-Desk Fax : (02151) 349-599 Mailbox : (02151) 349-577

Canon Euro-Photo GmbH

Customer-Support: (02154) 495-610
Info-Desk: (02154) 495-444
Fax: (02154) 495-333

Canon Italia S.p.A.

Pronto Canon : 02 8249 2000 BBS : 02 8249 2099

Canon Belgium N.V. / S.A.

Helpdesk: 0900-10627
Tel.: (02) 722.04.11 Fax: (02) 721.32.74

Canon Luxembourg S.A.

Tel.: (352) 48 47 961 Fax: (352) 48 47 96232

Canon Nederland N.V.

Helpdesk: 023 - 5 681 681
Tel.: 023 - 5 670 123 Fax: 023 - 5 670 124

Canon Danmark A/S

Hotline: 44 88 26 66

Canon España S.A.

Help Desk: 906 301 255
Tel: (91) 538 45 00 Fax: (91) 411 41 76
E-mail: helpdesk@btlink.net

Canon Norge as

Tlf. 22 62 93 21 Faks: 22 62 06 15
E-mail: helpdesk@canon.no

*Finland***Canon OY**

Puhelin: 010 54420 Fax: 010 544 4571
Help Desk: 0600 0 22606 (14,80 mk/min+pvm)
Help Desk: 0600 0 22666 (enint. 40mk/puhelu+pvm)
Sähköposti: helpdesk@canon.fi

Canon (Schweiz) AG

Tel. 01-835-6161, Fax 01-835-6860
Hotline 0900 57 55 20

Canon Svenska AB

Stensättravägen 13, S-127 88, Skärholmen, Sweden

*Austria***Canon GmbH**

Zetschegasse 11, 1232 Wien, Austria
Tel: 01 680 88-0
Fax: 01 680 88-222

OCEANIA**Canon Australia Pty. Ltd.**

Info-Line: (02) 9805 2864

Canon New Zealand Ltd.

Info-Line: 0900-522666

ASIA**Canon Singapore Pte. Ltd.**

79 Anson Road, #09-01 / 06, Singapore 079906
Phone: (65) 532 4400 Fax: (65) 221 7577

Canon Hongkong Co., Ltd.

9/F, The Hong Kong Club Building, 3A Chater Road, Central, Hong Kong
Phone: 852-2739-0802 Fax: 852-2369-7701

Canon Marketing Services

No.1 Jalan Kilang Timor, #09-00, Pacific Tech Centre,
Singapore 159303
Phone: (65) 799 8888 Fax: (65) 273 3317

Canon Marketing (Malaysia) Sdn. Bhd.

Wisma General Lumber, Block D, Peremba Square,
Saujana Resort, Section U2, 40150,
Shah Alam, Selangor Darul Ehsan, Malaysia
Phone: (60) 3 744 6000, (60) 3 745 0055
Fax: (60) 3 745 0505

Canon Marketing (Thailand) Co., Ltd.

10th Floor, Bangkok City Tower,
179/34-45 South Sathorn Road,
Bangkok 10120, Thailand
Phone: (662) 344 9999 Fax: (662) 344 9910

Canon Marketing (Hongkong) Co., Ltd.

10/F, Mirror Tower, 61 Mody Road, Tsimshatsui East
Kowloon HongKong
Phone: 852-2170-2828 Fax: 852-2723-9684

Adobe Customer Support

To view information on the support options available from Adobe:

Windows

1. Use the Microsoft windows Explorer to open the [Support] folder in the PhotoDeluxe Home Edition CD-ROM.
2. Double-click the folder that corresponds to your geographic location. Inside, you will find a file that contains more detailed support information for your location.

Macintosh computer

1. Open the [Support] folder in the PhotoDeluxe CD-ROM.
2. Double-click the folder that corresponds to your geographic location. Inside, you will find a file that contains more detailed support information for your location.

Canon